

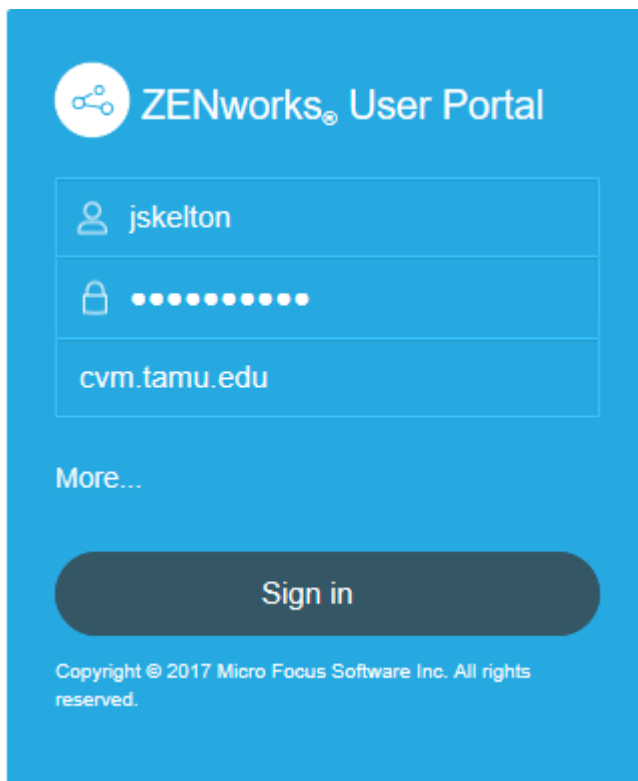
How to enroll an Android device in ZENworks

1. In the Google Chrome browser on the Android device, enter:

cvmzen.cvm.tamu.edu/zenworks-eup

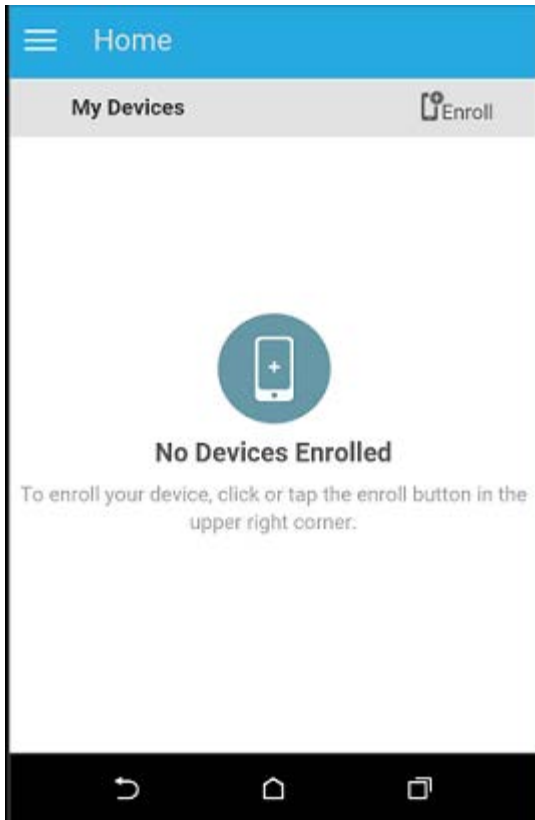
NOTE: You must use Google Chrome. The built-in Internet browser is not supported.

The login screen for the ZENworks User Portal is displayed. You use the user portal to enroll devices to the zone.

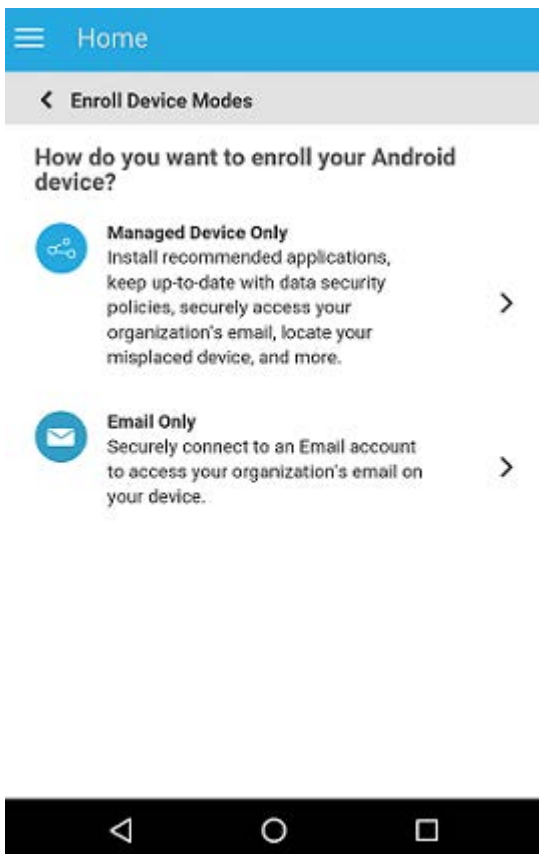


All devices associated with the user, are displayed in the ZENworks User Portal.

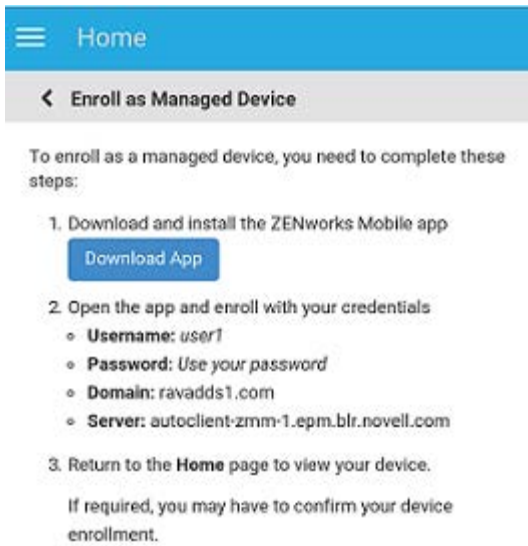
2. Enter your user name, password and specify `cvm.tamu.edu` as the domain.
Tap **Sign In**.



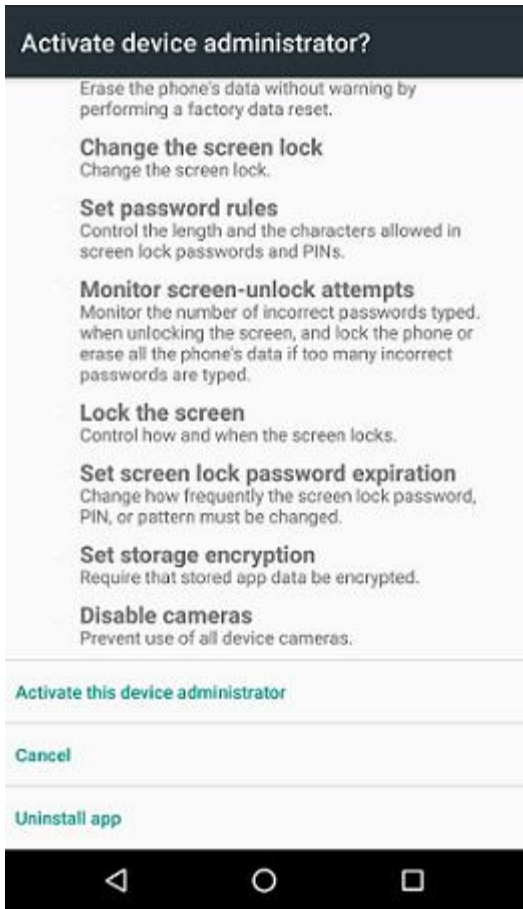
3. Tap **Enroll** in the upper-right corner to display the enrollment options for the device.



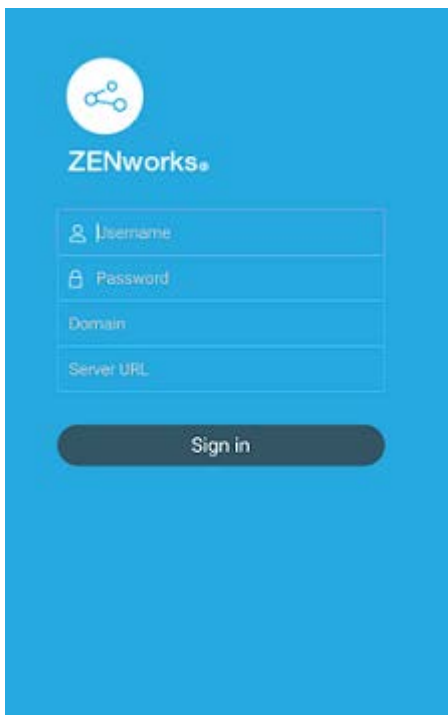
4. Tap **Managed Device Only**.



5. Tap **Download App**. The user will be directed to the Google Play Store, where the user needs to click **Install** to install the ZENworks Agent app. After installation, click **Open**.
6. Click **Activate this Device Administrator** to enable you to manage the device by performing the operations listed in this screen.



7. The ZENworks Agent app login screen is displayed.



8. Fill in the fields, then tap **Sign In**.
- **User name, Password, Domain, Server URL:** Use the same user name, password, and registration domain (if required) that you had initially used to log in to the ZENworks User Portal along with the server URL of:

cvmzen.cvm.tamu.edu

9. The ZENworks Agent App Home screen is displayed, showing that the device is enrolled and active.

